

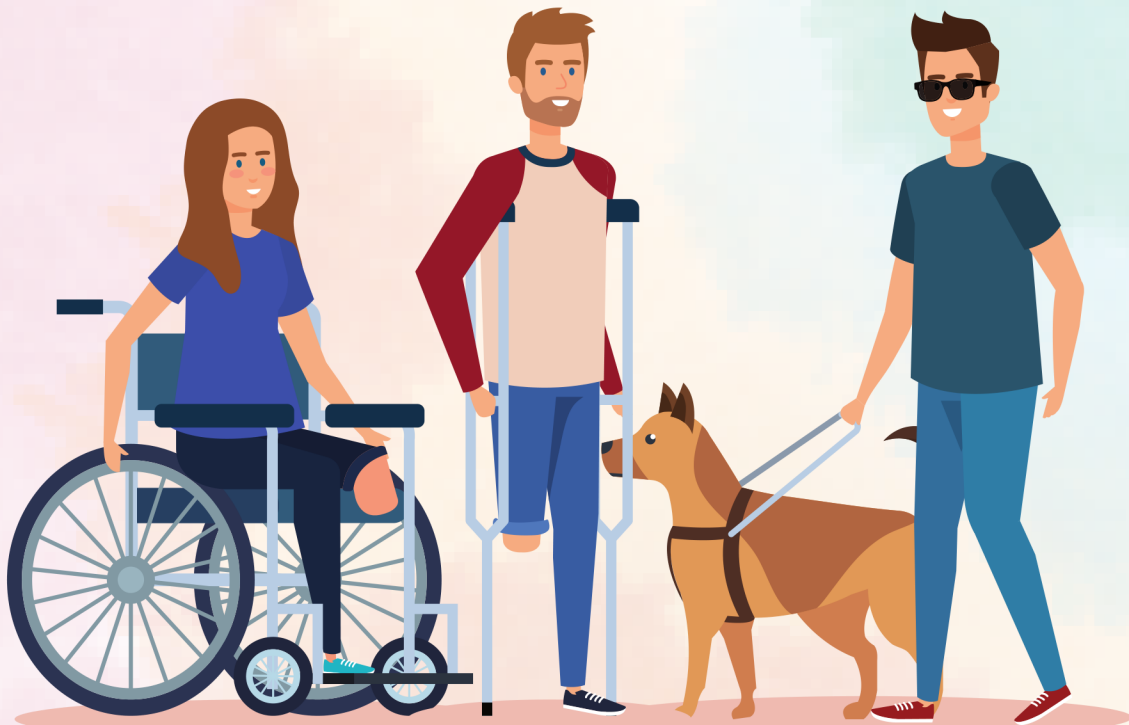
City of Rancho Cucamonga and  
Kids Included Together (KIT)

# Disability Inclusion & Behavior Support Training

Thursday, October 19

9:00 a.m. - 3:30 p.m.

Central Park | 11200 Base Line Rd.



Continental Breakfast and Lunch Provided

RSVP by: Thursday, October 12 | \$25.00 per person

Please make checks payable to City of Rancho Cucamonga



Facilitated by:

**Nili Mathews, CTRS,**

Certified Therapeutic Recreation Specialist

KIT Inclusionista since 2006

# Disability Inclusion & Behavior Support Training

Thursday, October 19 | 9:00 a.m. - 3:30 p.m.

Central Park | 11200 Base Line Rd.

## SESSION DESCRIPTIONS

### DISABILITY INCLUSION: START HERE

Including children with disabilities in child and youth development programs can be very challenging, but nothing is more rewarding than witnessing a child make a friend, enjoy a game, or experience an accomplishment. This training is designed to help you explore your thoughts and feelings about disability inclusion, understand socially responsible language, and make a plan to overcome an inclusion barrier in your program.

1. Accurately define socially responsible language.
2. Correctly determine whether five statements are consistent with the philosophy of inclusion.
3. List one idea to address the identified barrier that reflects the philosophy of inclusion.

### IT'S IN THE BAG: CREATING A BAG OF TRICKS FOR SUCCESS WITH REAL-WORLD CHALLENGES

Working with children and youth takes a certain amount of flexibility and thinking on your feet. Participants will learn about tangible tools that can be used to support children and youth with disabilities or behavioral challenges as well as those who may just be having a rough day. The module also introduces tools you can use when you feel stuck, and programming isn't going as planned.

1. Match a "Bag of Tricks" item to the needs of a youth in your program.

### BEHAVIOR SUPPORT TECHNIQUES

The focus of this training is to unpack the WHY of behavior. Participants will practice identifying antecedents to behavior and determine what consequences shape behavior. The session concludes with a discussion about selecting strategies to address the antecedents, which helps children make positive behavior changes.

1. List the correct ABCs of behavior (antecedent, behavior, and consequences) in one scenario.
2. Develop one behavior support technique to effectively address the identified antecedent in a scenario.

### SUPPORTING BEHAVIOR IN INCLUSIVE SETTINGS

This session introduces participants to the four guiding principles of inclusion and the KIT support pyramid. You'll explore how to use these concepts to create a program that strengthens disability inclusion and behavior support.

1. Describe at least one strategy at each level of the pyramid to support a youth in a scenario.