

CPRS DISTRICT 12 | FALL 2021

THE NEWS AT TWELVE

Quarterly Newsletter from D12 Board



D12 BOARD MEMBERS 2021- 2022

President

Andrea Gonzalez, City of San Marcos

President-Elect

Ken Rundle, City of Encinitas

Vice President

Tracy Stayton, City of Carlsbad

Treasurer

Heather Carter, City of El Cajon

Secretary

Brooke Walsh, City of La Mesa

Director of Communications

Brooke Walsh, City of La Mesa

Director of Programming

Carrie Sanchez, City of Poway

Director of Sponsorship

Mark Rosplock, City of El Cajon

Director of Training & Development

Kevin Payton, County of San Diego

A-Team Representative

Nick Buck, City of Encinitas

Administrator Section

Jessica Cissel, County of San Diego

Aging Section

Joanne McGhee, County of San Diego

Aquatics Section

Nicole McNeil, City of San Diego

Development/Operations Section

Paul Publico, USA SHADE

Educators Section

KJ LeCesne, SDSU

Recreation Section

Johnny Chou, City of San Diego

Recreation Therapy Section

Gerald Cunanan, City of San Diego

Regional Director

Buck Martin, City of San Marcos

Members at Large

Annabel Jamison, City of Escondido

Rebecca Corfman, City of El Centro

#2021Refresh

MESSAGE FROM THE BOARD

Greetings CPRS District 12 members, fall is in the air! Take a moment to reflect the change happening around you and the beauty of the vibrant colors that our fall season of change gives to us. This fall when you attend the District 12 November workshop you will also see some changes, specifically our new board shirts and kokui nut leis. This change in board apparel is to send and represent the message and spirit of Aloha!

If you have ever been to the Hawaiian Islands, you may have experienced Aloha, possibly by someone greeting you by placing a homemade lei around your neck, or by just showing you a loving and caring attitude of service and respect. The word aloha is commonly used as a greeting, translated as "hello" or "goodbye." Aloha is more than just a greeting, it's a concept and a way of living, an exchange of positive energy — the very foundation of Hawaiian values. Its multiple meanings include love, affection, generosity, speaking from the heart, patience, and listening. "alo" means sharing, in the present. "ha" means breath, life energy. Furthermore, each letter has its own meaning as well.

As a board our new shirts and leis are our statement that we are embracing this spirit as ambassadors of Aloha! We hope you will join us in this spirit, by celebrating it at your work, home and of course the November workshop where Aloha attire is strongly encouraged! Together we will celebrate one another, share ideas, build relationships, and support each other in our profession and in the true spirit of Aloha!

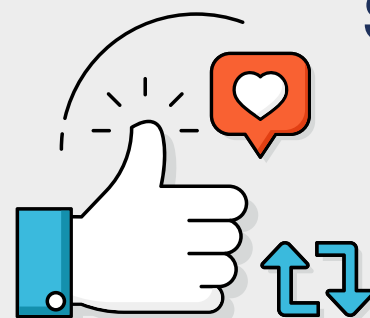
IN THIS ISSUE:

Message From D12	2
November Workshop	3
Mentorship Program	5
Scholarships	6
Upcoming Events	7
Around the District	9
Board Members	10
Join the Board	11
Sponsors	11

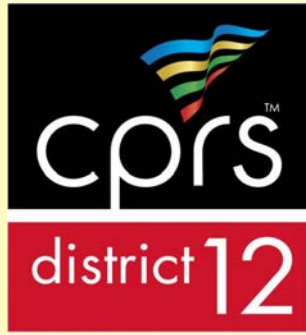
FOLLOW US ON FACEBOOK AND INSTAGRAM

 CPRS District12

 @cprsdistrict12



**Stay up
to date
on the
latest
info in
D12!**



NOVEMBER WORKSHOP



November 17 | 8:30am – 2:00 pm
Coronado Community Center | 1845 Strand Way

Visit the event website to register today!

<https://tinyurl.com/CPRSD12NovRegistration>

Keynote

Tom Hellmann, CPRS State Board President

Session 1

10:20am – 11:10am

Small Drops of Change That Make Big Splashes
– Impacting Growth & Change in Aquatics

Creative Ways to Successfully Hire & Retain
Employees in a Competitive Job Market

Equity, Inclusion & Diversity in Parks and
Recreation

Emotional Intelligence: Today's Necessary Soft
Skill

Park Planning & Development: Ten Steps to a
Successful Project

Landing Your Dream Job Starts Today

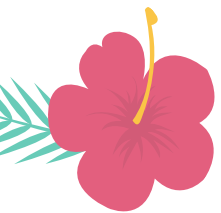
Intergenerational Activities and Volunteer
Recruitment

Spotify Your Playlist

Contract Program Roundtable

Session 2

11:20am – 12:10pm



Session 3

1:10pm – 2:00pm





D12 TITLE SPONSOR

USA SHADE & FABRIC STRUCTURES

2019 | 2020 | 2021

"We inspire stunning outdoor spaces through the benefits of shade"



For 30 years, USA SHADE & Fabric Structures has helped Cities and Counties find EXACTLY what they need to enhance outdoor spaces such as:
Amphitheaters, Playgrounds, Recreation Areas,
Dining Pavilions, Aquatic Facilities and more...

USA SHADE & Fabric Structures is the gold standard when it comes to designing, engineering, manufacturing AND installing creative fabric shade solutions.

www.usa-shade.com
[usa_shade](#) [#usashade](#)

**USA SHADE & Fabric Structures
cherishes the partnership with District 12!
THANK YOU!**



**If you need a consultation or want to learn more about our
products, email paul.publico@usa-shade.com
or call 619-616-8272**

JOIN THE D12 MENTORSHIP PROGRAM

WE ARE LOOKING FOR MENTORS AND MENTEES
TO JOIN OUR MENTORSHIP PROGRAM

SHARE INSIGHTS AND EXPERIENCE

- PROVIDE GUIDANCE TO ASPIRING YOUNG -
PROFESSIONALS

CUSTOM MATCHES WITH MENTORS AND
MENTEES BASED ON CAREER GOALS AND
AREAS OF INTEREST

**CAREER DEVELOPMENT - NETWORKING -
LEADERSHIP AND PROFESSIONAL SKILLS**

FOR MORE INFORMATION AND TO APPLY FOR
THE MENTORSHIP PROGRAM EMAIL
KEVIN.PAYTON@SDCOUNTY.CA.GOV

DISTRICT 12 SCHOLARSHIPS

District 12 is now accepting 2022 Ray Butler Scholarship Applications!

Each year, CPRS District 12 awards scholarships to deserving students and professionals within the District's boundaries. The scholarships are presented in honor and memory of Ray Butler, retired professor and former chairman of the San Diego State University's Recreation Department. Scholarships are cash awards that are expected to be used to further education and training in the field of recreation and tourism.

There are two scholarship categories:

PAST PRESIDENT AWARD – (More than one scholarship may be awarded. 1st place award is \$1,000 and if more than one scholarship awarded 2nd place and additional awards will be between \$500 - \$1,000)

The Past President Scholarship Award. This scholarship was designed for a full-time or part-time college student working toward a career in the recreation or related field. The purpose of this award to assist students with educational expenses. Applicants are not required to have a current CPRS membership. However, special consideration will be given to applicants with a CPRS membership.

PARK & RECREATION PROFESSIONAL AWARD – (More than one scholarship may be awarded. 1st place award is \$500.00 and if more than one scholarship awarded 2nd place and additional awards will be between \$250 - \$500)

This category was designed to assist the working full-time and part-time employee in furthering his/her professional growth. The Professional Scholarship Award can be used for continuing education, professional trainings and the 2021 CPRS State Conference. Applicants must have a current CPRS membership.

Apply online at
<https://tinyurl.com/D12Scholarship2022>

Deadline to apply is
 January 7, 2022.

Do not miss out on this great opportunity to further your education and training!



NOW ACCEPTING APPLICATIONS


CPRS District 12
2022 Ray Butler Scholarships

worth up to \$1,000




For more information and to apply, go to:
www.tinyurl.com/D12Scholarship2022

CREATING ENVIRONMENTS
PEOPLE ENJOY!®



Olympus Park, Encinitas

32332 CAMINO CAPISTRANO, STE. 205
 SAN JUAN CAPISTRANO, CA 92675
WWW.RRMDESIGN.COM | 949-361-7950



CPRS REGION 5 MINI CONFERENCE

CPRS REGION 5 MINI
CONFERENCE

REGISTRATION OPEN!

JANUARY 27, 2022 | 8:00 AM - 2:30 PM
NORMAN P MURRAY COMMUNITY AND SENIOR CENTER
24932 VETERANS WAY MISSION VIEJO, CA

REGISTER AT THE LINK BELOW:

[HTTPS://TINYURL.COM/REGION5REGISTRATION](https://tinyurl.com/region5registration)



SPEAKERS, PRIZES, AND
FUN!

CALIFORNIA PARK & RECREATION SOCIETY

DIRECTOR'S ACADEMY



The purpose of this academy is to offer a statewide two-day training for current agency executives and those desiring to be in that role in the future. The training is developed around the new and/or future Director as well as the veteran executive. Speakers include public and private sector professionals including City Managers office, Directors, Managers and staff in the trenches.

You don't want to miss this incredible opportunity!

JANUARY 20 & 21, 2022

ANTHONY MUÑOZ COMMUNITY CENTER | ONTARIO, CA

Arrival: January 20, 11:00 a.m.

Departure: January 21, 3:00 p.m.

Fee: \$120 Member / \$200 Non-Member

Hotel Information

Sheraton Ontario Airport Hotel
429 N Vineyard Avenue, Ontario, CA 91764 | (909) 837-8000

[Click Here to book your group rate for CPRS Director's Academy](#)

Topics include:

- Maintenance & Operations
- Risk Management
- Budgeting
- Planning & Resource Management
- Ethics & Surviving the Politics
- Homeless Solutions



Santa Ana River Trail- OC Parks
Santa Ana, CA



We provide turnkey solutions for
all that your park requires.

Phone
Websites

800-453-2735

gwpark.com

gametime.com



U.S. COMMUNITIES
GOVERNMENT PURCHASING ALLIANCE



A PLAYCORE Company



DONATE TO THE D12 SCHOLARSHIP FUND

Just \$2.00 per
member can help
fund an extra
scholarship!

To donate \$2.00 visit:

<https://tinyurl.com/D12ScholarshipDonation>

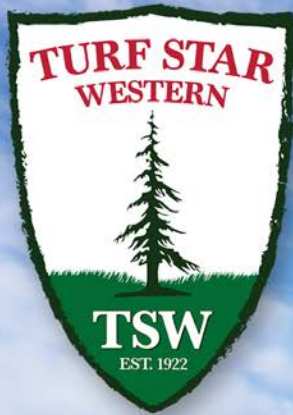


Save
the Date

April 12, 2022

Encinitas Community Center

**ANNUAL AWARDS &
INSTALLATION BANQUET
DETAILS COMING SOON!**



800-585-8001

www.turfstar.com

TORO®



Providing Quality Turf Equipment for the Entire West Coast

"Recreate, hydrate, and all that good stuff! "

BUCK MARTIN, REGIONAL DIRECTOR



LAMKE FAMILY STUDENT EXPERIENCE FUND



Lamke Family Student Experience Fund has been created at San Diego State University as of October 2021.

The creation of the fund was announced officially at Gene Lamke's retirement event and this fund will be used to give Payne School students industry and educational experiences! Due to the generosity that a man like Gene can inspire, the campaign has already raised over \$25,000!

You can also contribute at:

<https://securelb.imodules.com/s/997/20/giving/form.aspx?sid=997&gid=1&pgid=3034&dids=1115&bledit=1>

LEADERSHIP SUMMIT

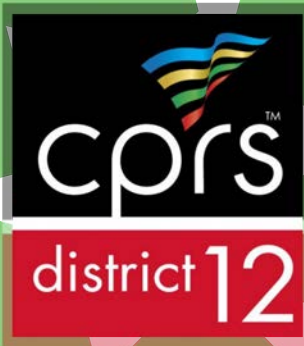
The 2021-2022 CPRS Leadership Summit was held on Thursday, September 9, 2021, in person at the Hyatt Regency Newport Beach. The Summit engaged leaders in attendance to brainstorm and connect ideas while generating an awareness of how we affect and influence others. It was great to be in-person and connect with so many amazing professionals. CPRS Headquarters personnel talked about the upcoming year, encouraging members to recruit and reach out to them whenever they need assistance. There were presentations by each Region / Section, to include the A Team. We had fun celebrating the CPRS 75th Anniversary by taking photos with 75th Anniversary bling and participating in a time capsule activity.

Here is a highlight summary of some of the day's activities:

Jedi Focus – Led by Dr. Brandon Taylor, Assistant Professor, CSU Fresno Department of Recreation Administration. The JEDI Focus (Justice, Equity, Diversity, and Inclusion) began with an amazing and powerful discussion on differences that Dr. Brandon Taylor and CPRS State Board President Elect Frank Carson had about their view of the American flag that was initiated through social media. The conversation was about how they were able to learn from each other by not letting difference of opinion and views keep them from communicating, which then allowed them to gain a better understanding of why each person felt the way they did. It was a model for how to get past differences and barriers through the use of effective communication to reach social acceptance of another person's views.

There was a major focus on Succession Leadership: Role Play, Board Succession, Member Succession, Value of Membership and its privileges, and Expanding Communication Beyond Membership Base

And not to mention, District 12 was able to show off our amazing new aloha board shirts. They were quite a hit in their debut!



2021 Refresh

ANDREA GONZALEZ
PRESIDENT



KEN RUNDLE
PRESIDENT ELECT



TRACY STAYTON
VICE PRESIDENT



HEATHER CARTER
TREASURER



BROOKE WALSH
SEC/DIR COMMUNICATION



CARRIE SANCHEZ
DIR PROGRAMMING



MARK ROSPOLOCK
DIR SPONSORSHIP



KEVIN PAYTON
DIR TRAINING & DEV



NICK BUCK
A TEAM REP



JESSICA CISSEL
ADMINISTRATORS



JOANNE MCGHEE
AGING



NICOLE MCNEIL
AQUATICS



PAUL PUBLICO
DEV & OPS



KJ LECESNE
EDUCATORS



JOHNNY CHOU
RECREATION



GERALD CUNANAN
REC THERAPY



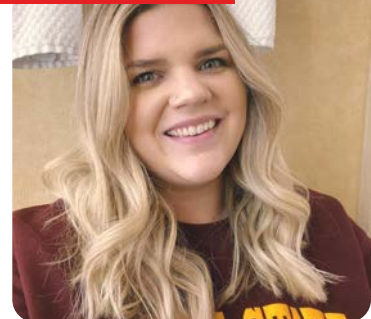
BUCK MARTIN
REGIONAL DIRECTOR



ANNABEL JAMISON
MEMBER AT LARGE



REBECCA CORFMAN
MEMBER AT LARGE



There is no better professional growth opportunity than joining a CPRS board!

Nominations are due next week so submit today!

definition of networking



THANK YOU SPONSORS!



USASHADE & Fabric Structures®



**IF YOU ARE
INTERESTED IN
BECOMING A
SPONSOR**



Contact: Mark Rosplock
mrosplock@cityofelcajon.us